



The Valuing Medway People Partnership Board had a meeting 3rd September 2007.

Here are the notes from the meeting.

1. People at the meeting were:

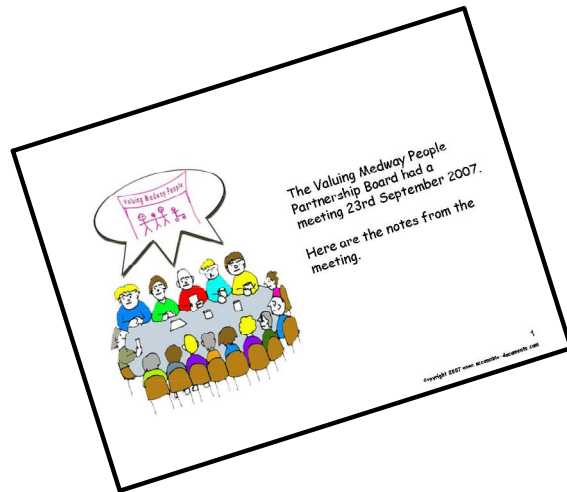
Kay Brunning
Mary Butcher
Viv Cooper
Mair Dyer
Rick Dartnail
Christine Edwards-Daem
Jane Etheridge
Reg Higgs
Kathy Johnson Co Chair
Marilyn Kitchenham
David Le Breton
Beth Peal
Jo Poynter
Bev Reid
Monica Rivers
Jason Terry
Ann Windiate Co Chair
Nikki Jagger Secretary
Tim Guest Supporter
Wayne Hill Support Team
Graham Honess Support Team

People who said sorry they could not
be at the meeting were:

Bridget Bygrave-Relf
Guy Offord
Amanda Rogers
Bobbie Tiaino
Robert Wilson

Everybody introduced themselves

We looked at the notes of the meeting we had in July.



Page 2 Monica Rivers was at the meeting.

We need to add Monica's name

Page 15 The first paragraph should read "From April 2008..."

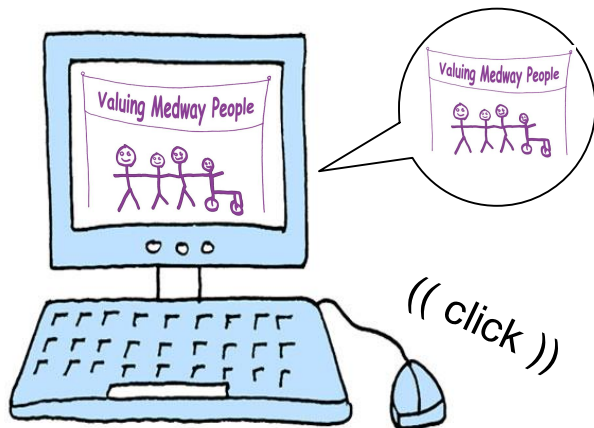
Page 18 The last paragraph should read "8th August 2007".

Page 27 The first paragraph should read "5th September 2007".

Jo will ask Sue Whiting to come to the Partnership Board in Suzanne's place.

Jo

Bridget, Colin, Beth and Nikki still need to meet to see if they can make a plan for developing the www.valuingmedwaypeople.org.uk website.



Bridget

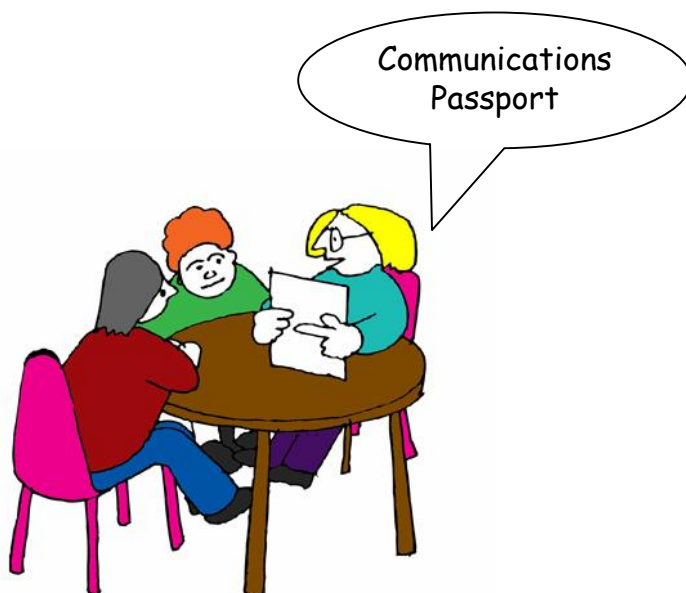
Colin

Beth

Nikki



Youth
Funds



According to Medway Council's website young people with learning disabilities have had very little from the Youth Funds.

Ann Windiate will speak to Colin Rees.

Ann

Kay Meinertzhagen is unable to get a contact regarding the Communications Passport and needs help setting up the meeting with Kathy Wadsworth and Jo Poynter.

Ann will check her action for June 2007 meeting.

Ann



Colin, Wayne and Graham are meeting with Colette Glasson from Medway Council on 26th September to give her their ideas about making information easier to read.

Colin



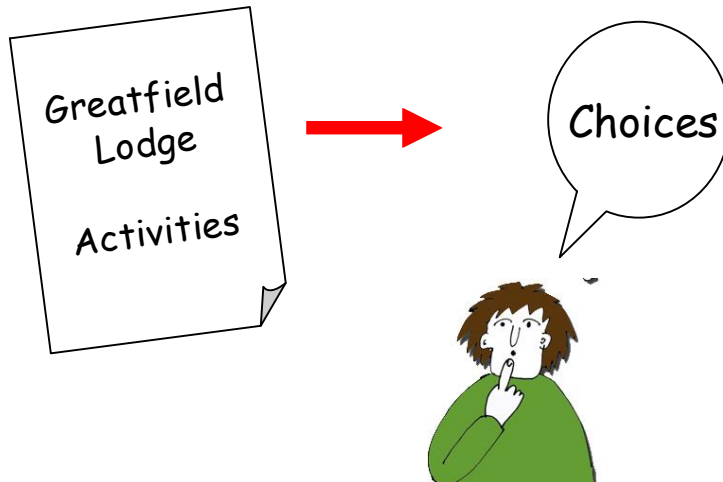
Daniel and Jason will attend the Kent Health Implementation Group when there is something that affects Medway on the agenda.

Jo



Nikki will send to everyone the notes from the Carers' discussion.

A thank you letter needs to be sent to Mrs Stirling for presenting at the June Partnership Board.



The Partnership Board were told that the new choices of activities at Greatfield Lodge will be discussed on the 17th September 2007.



→ 31st August

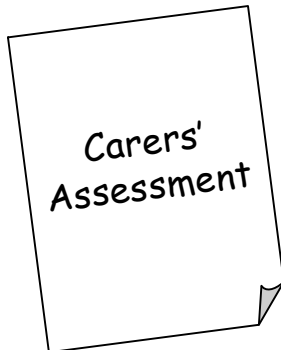
The first meeting of the Carers' Support Steering Group will be on the 31st August 2007 led by Jane Love, a member of Medway Council Contracts team.



Carers' Grant



Information about how the Carers' Grant is spent in Medway will be sent again to Partnership Board members.

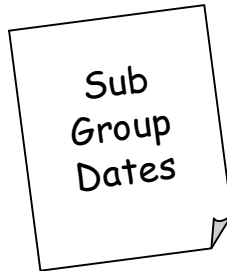


Marilyn will let Viv know how many Carer Assessments have been done and how many have been offered.

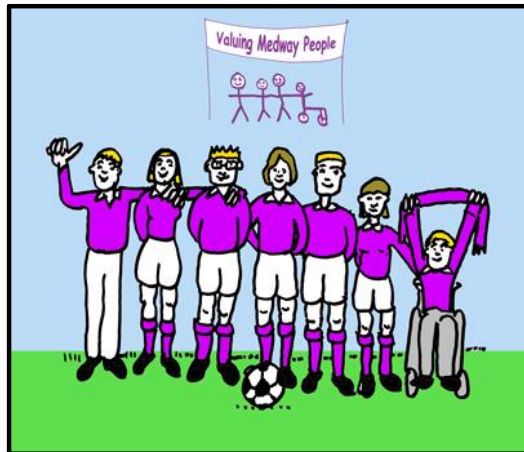




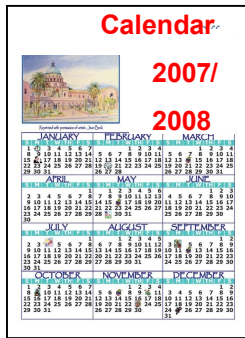
Denise Watkins is the manager of Medway Council learning disability respite services. She will be asked to join the "short breaks" sub group.



Nikki will send us all the up to date list of dates and themes for all the forums and sub groups.



Ann told us there will be a booking system held at the "Fitness Academy" at Strood Leisure Centre. Adults with a learning disability will be able to learn to play 5-a-side football.



The next Autism meeting will be 24th September 2007.



Nikki will invite Candie Horton to come to the Partnership Board and also confirm with Heather Drew that she has the dates.

Nikki

The Tideway



Liz Nicholas will arrange a meeting about selling "The Tideway" as a shared ownership project and look for a new building for the move on supporting people project.

Liz

Greatfield Lodge



Liz will tell us at the October Partnership Board how many staff work with how many adults with a learning disability at Greatfield Lodge.

Liz

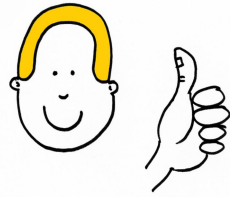


Keeping Safe. Colin said 10 adults with a learning disability have been invited to Medway Police Station Open Day on 16th September 2007.



Jo will write to members of the Partnership Board who have missed three or more meetings in a row.

Jo



→ 15th October



→ Link to:
www.valuingmedwaypeople.org.uk
((click))

The Carers' Plan is with the Social Care Management Team. Jane Love is now leading on this with all carer groups. Reg is involved in this.

Sally-Ann Larkin and Marilyn Kitchenham will tell us about Adult Protection at the 15th October 2007 meeting.

Sally Marilyn

Ann will go to see Michael Howard in hospital at Sevenoaks Hospital.

Ann

There are still difficulties with finding the "Valuing Medway People" website link on the Medway Council website. Ann will talk to the people who manage the Medway Council website.

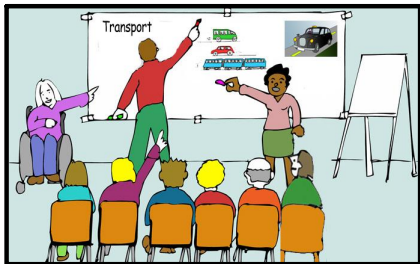
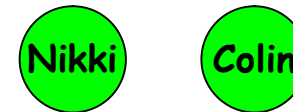
Ann



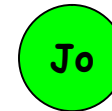
Nikki will find out what pictures Partnership Board members want for making notes and reports. Jo and Colin will sort out what to put on CD's.



A list of Partnership Board dates to be added to the end of Partnership Board Minutes. Dates to be sent to Colin for putting on website.



There will be a Transport Event on 13th March 2008.



A Health event planning meeting is still to be held.

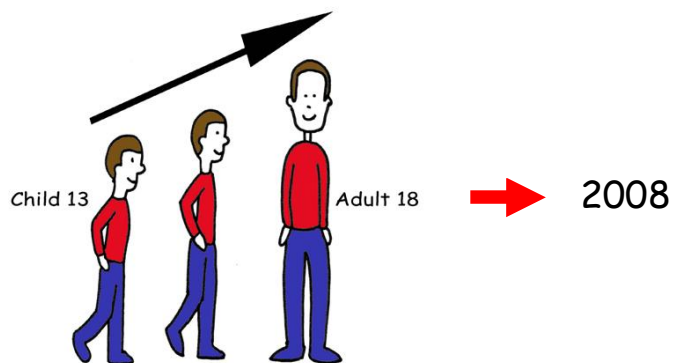


Job
Vacancy
Medway
Pathway
To Inclusion
Project

A Project Leader for "Medway Pathways to Inclusion" project has been advertised.



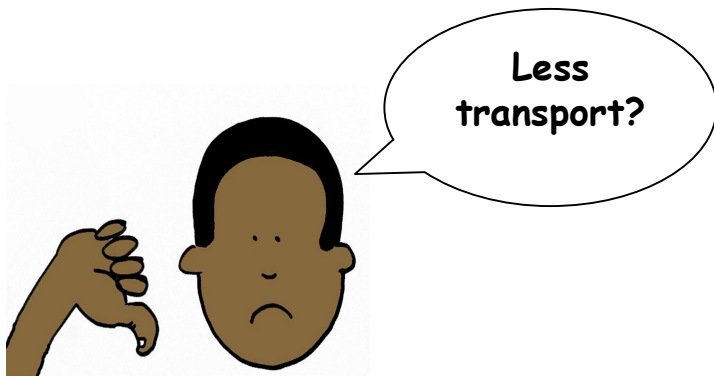
David Behan - Director of Social Care for the Department of Health is visiting the project on 16th November.



As we are unable to have the planned themed afternoon for Transition this will be planned for next year.



Medway Primary
Care Trust



Very Important Issues

Rick is moving to his new house on 15th September 2007.

Medway Primary Care Trust have given £50,000 this year for work with people with complex needs moving from younger peoples services to adult services and those currently not receiving health checks. This money has been given to the palliative care team who will be working with us.

Transport in Medway is being centralised. Monica said there was going to be less service. Jo is unaware of this. Monica will email information she has to Jo.



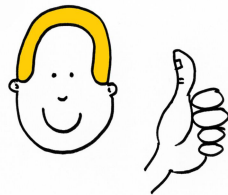
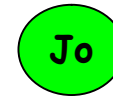


It was suggested that it will be helpful to have a directory telling us who's who and what people do in Medway. The Isle of Wight have just done this.

Jo to bring a copy of theirs to the next meeting.



Jo and Nikki have been asked to attend the VOLuME meetings.

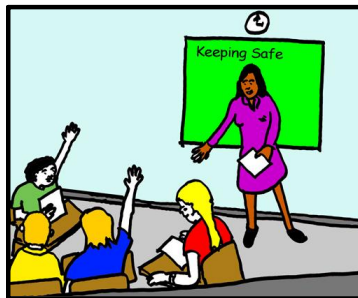
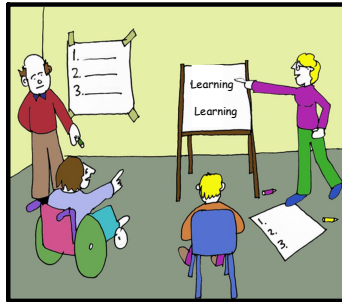


The Medway Challenging Behaviour Service is continuing to provide a good service for the 4 students. Important people in the region and across the country have seen it as an excellent service in Medway. As Jo and Viv work across the country this has helped in the development of the service by being involved in other projects. These include advocacy and "Progression through Partnerships".

Death by *indifference*

Following up the *Treat me right!* report

<http://www.mencap.org.uk/html/campaigns/deathbyindifference/index.asp>



The Health Enquiry "Death by Indifference" has asked for information. Jo will send again to Partnership Board members.

Jo

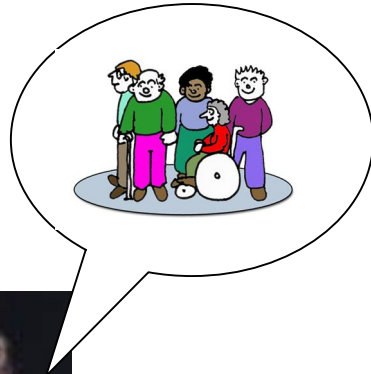
David will set up the Education Collaborative Forum (a group to look at education for adults with learning disabilities) in Mid Kent.

David

Mary requested that the Keeping Safe team take their presentation to New Brompton College.

Colin

An Awayday for the Friendship Project is planned for 12th October 2007 at King Charles Hotel.



An announcement was made on the radio that the Prime Minister is setting up a review of children's learning difficulty services.

Ann is hoping that this will also happen in services for adults.

Forum for Adults with a Learning Disability

See notes.

The Friendship Planning Group will visit other areas that already have a dating/friendship agency set up.

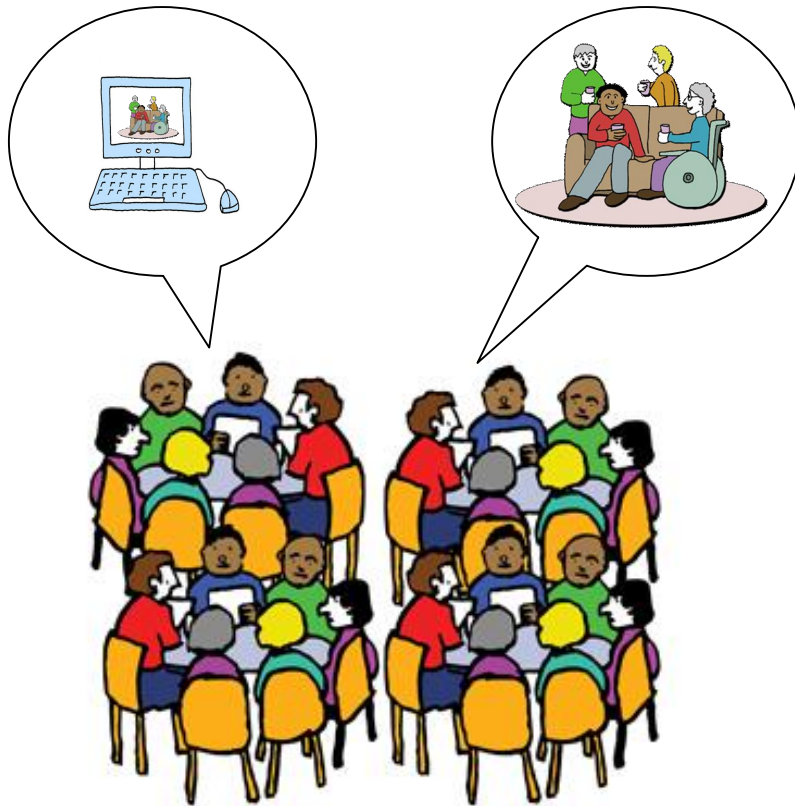
It needs to be decided how the agency will be advertised.

We may need a separate website set up.

Colin

Colin will be designing a flyer to be sent out advertising the Friendship Group.

Colin



Invitation



Please come to
our Friendship
Day



The Friendship Group are trying to plan how the group will continue next year after the Learning Disability Development Fund money.

Colin



Fair Access to Care & Direct Payments need to be discussed jointly; this needs to go to Cabinet Members for decision.

Ann will find out the dates.

This will come back to the Partnership Board.

Ann



Carers' Forum



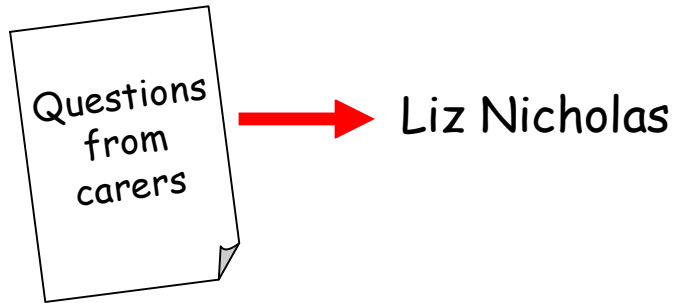
Carers' Forum

The carers are pleased with the Carers' Strategy.

If the local Carers' Strategy has been completed there may be an opportunity for input into the National Carers' Strategy.

The Carers' Forum to be held on 20th September 2007 has been postponed until 11th October 2007.

Complex Carers are feeling unhappy because it takes a long time to make things happen.



Carers feel they are equal on the Partnership Board and this is how it should be all the time.

They do not want to be seen as constantly complaining, but helping the development of the learning disability services.

A list of issues about the respite services has been made by the carers and passed to Denise Watkins and Liz Nicholas.



Ann said that Liz is the lead person for housing on the Partnership Board.

Kay asked if a carer could be included in the Fair Access to Care Sub Group.





October 15th
meeting

Providers Forum

Information about Positive Risk Assessments will be brought to the next Partnership Board meeting.

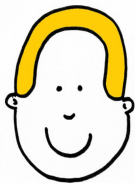


Providers felt that the Mental Capacity Act wouldn't make a big difference to them.

However, this is discussed at each Forum.

Robin Maxted presented Direct Payments at the last Providers Forum.

Providers are in favour these.



Direct
Payments.
Providers
are in favour

Voluntary Organisations



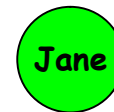
Kay and Monica are attending a conference in Bristol regarding Learning Disabled Offenders and another conference in December "Justice for All".

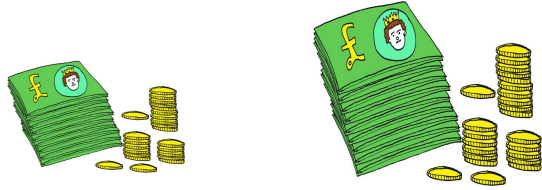
Members Disability Task Group



Jane gave a presentation.

It was agreed that recommendations would be brought to the Partnership Board prior to going to the committees.





We are spending too much of our budget

Medway **NHS**
Primary Care Trust



How much?



Finance

The Partnership Board is still working on a budget of £20,358,000 (twenty million three hundred and fifty-eight thousand pounds).

The exact amount that the Primary Care Trust is putting into the budget has still not been agreed.

We are still spending more money than we have in the budget.

Most of this is on residential care.

It was noted that 22 new people had gone into residential care.

Marilyn and Jo did not think that this was correct.

Marilyn will find out and tell us next time.



Calendar



2007/ 2008

Reprinted with permission of artist - Jean Deck

JANUARY							FEBRUARY							MARCH							
S	M	T	W	T	F	S	S	M	T	W	T	F	S	S	M	T	W	T	F	S	
1	2	3	4	5	6	7	1	2	3	4				1	2	3	4				
8	9	10	11	12	13	14	5	6	7	8	9	10	11	5	6	7	8	9	10	11	
15	16	17	18	19	20	21	12	13	14	15	16	17	18	12	13	14	15	16	17	18	
22	23	24	25	26	27	28	19	20	21	22	23	24	25	19	20	21	22	23	24	25	
29	30	31					26	27	28					26	27	28	29	30	31		
APRIL							MAY							JUNE							
S	M	T	W	T	F	S	S	M	T	W	T	F	S	S	M	T	W	T	F	S	
						1	1	2	3	4	5	6							1	2	3
2	3	4	5	6	7	8	7	8	9	10	11	12	13	4	5	6	7	8	9	10	
9	10	11	12	13	14	15	14	15	16	17	18	19	20	11	12	13	14	15	16	17	
16	17	18	19	20	21	22	21	22	23	24	25	26	27	18	19	20	21	22	23	24	
23	24	25	26	27	28	29	28	29	30	31				25	26	27	28	29	30		
30																					
JULY							AUGUST							SEPTEMBER							
S	M	T	W	T	F	S	S	M	T	W	T	F	S	S	M	T	W	T	F	S	
						1	1	2	3	4	5		3	4	5	6	7	8	9	1	2
2	3	4	5	6	7	8	6	7	8	9	10	11	12	10	11	12	13	14	15	16	
9	10	11	12	13	14	15	13	14	15	16	17	18	19	17	18	19	20	21	22	23	
16	17	18	19	20	21	22	20	21	22	23	24	25	26	24	25	26	27	28	29	30	
23	24	25	26	27	28	29	27	28	29	30	31										
30	31																				
OCTOBER							NOVEMBER							DECEMBER							
S	M	T	W	T	F	S	S	M	T	W	T	F	S	S	M	T	W	T	F	S	
						1	1	2	3	4											
8	9	10	11	12	13	14	5	6	7	8	9	10	3	4	5	6	7	8	9		
15	16	17	18	19	20	21	12	13	14	15	16	17	18	10	11	12	13	14	15	16	
22	23	24	25	26	27	28	19	20	21	22	23	24	25	17	18	19	20	21	22	23	
29	30	31					26	27	28	29	30			24	25	26	27	28	29	30	
														31							

The notes from our meeting are on our website

www.valuingmedwaypeople.org.uk

our next meeting will start at 10am on October 15th 2007.



PARTNERSHIP BOARD

2007/08/09

DATE	TIME	VENUE
15 th October 2007	10-3pm	Presentation Suite
26 th November 2007	10-3pm	Presentation Suite
7 th January 2008	10-3pm	Presentation Suite
28 th January 2008 (Transition themed afternoon)	1pm-3pm	Maple Room, Municipal
18 th February 2008	10-3pm	Rochester Health Centre
17th March 2008-PUBLIC MEETING	1-4.15pm & 6-8pm	tba
28 th April 2008	10-3pm	Rochester Health Centre
9 th June 2008	10-3pm	Rochester Health Centre
21 st July 2008	10-3pm	Rochester Health Centre
1 st September 2008	10-3pm	Rochester Health Centre
13 th October 2008	10-3pm	Rochester Health Centre
24 th November 2008	10-3pm	tba
12 th January 2009	10-3pm	tba
16 th February 2009	10-3pm	tba
30th March 2009-PUBLIC MEETING	1-4.15pm & 6-8pm	tba