



The Valuing Medway People Partnership Board had a meeting on 18<sup>th</sup> June 2007.

Here are the notes from the meeting.

# 1. Here is the list of the people who came to our meeting.

Suzanne Brooker  
Kay Brunning  
Bridget Bygrave-Relf  
Viv Cooper  
Christine Edwards-Daem  
Reg Higgs  
Kathy Johnson           Co chair  
Marilyn Kitchenham  
David Le Breton  
Kay Meinertzhagen  
Guy Offord  
Jo Poynter  
Monica Rivers  
Amanda Rogers  
Dr Sabah Sadik  
Jason Terry  
Robert Wilson  
Ann Windiate           Co chair

## Guests:

Trician Vandy (guest)

## Support team:

Jasmine Derzi  
Wayne Hill  
George Guest  
Colin Guest  
Graham Honess  
Nikki Jagger  
Bev Reid

## People who said sorry they could not come to the meeting:

Mary Butcher  
Rick Dartnail  
Myer Dyer  
Liz Nicholas  
Beth Peal  
Bobbie Tiaino

2. We looked at the notes from the meeting we had on March 26<sup>th</sup>.  
We agreed they were okay.



Michael Howard is still in hospital.



Some footballers from Gillingham Football Club went to visit Michael



Mair Dyer will come to the Partnership Board meetings.

Mair works for Connexions.



Voluntary Organisations Forum have asked the police and prison service to meet them.



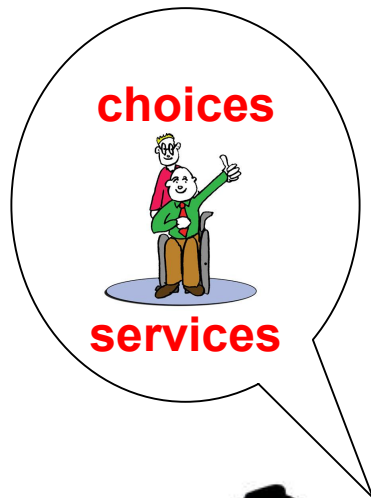


Jo said the Valuing People Support Team will train people who work in prisons.

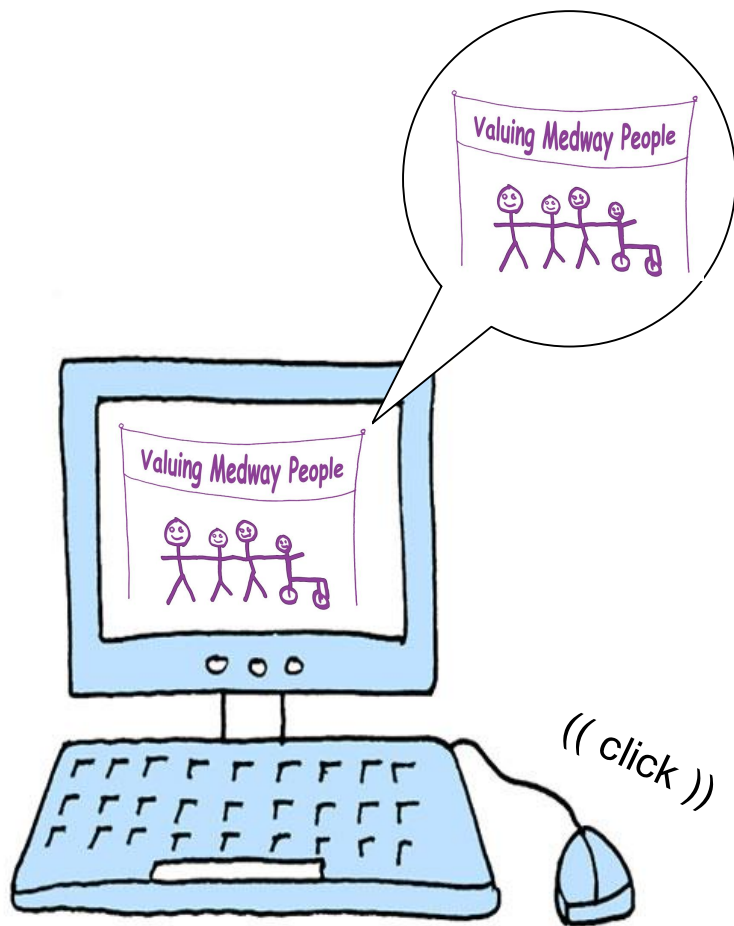
They will help them understand the needs of people with learning disabilities.



We have asked the Safeguarding Children Board to send somebody to our meetings, Amanda Rogers attends this Board.



We have a group that plans person centred services. We call the group the Person Centred Commissioning Group (PCCG). The people on the group have asked carers and adults with a learning disability to help them look at how they make decisions about services.



Our website is now eighteen months old.

We will make a plan for developing the website.

**Bridget**

**Colin**

**Beth**

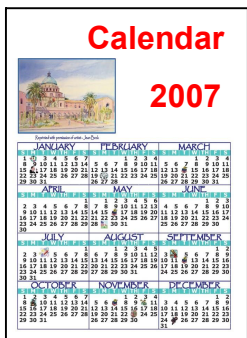
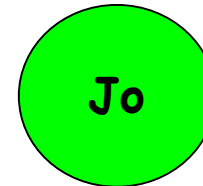
Colin will tell us how many people are using the website

[www.valuingmedwaypeople.org.uk](http://www.valuingmedwaypeople.org.uk)

**Colin**



Partnership Board and sub groups would like to have pictures so that their information is easy to read.



We will have an extra Partnership Board meeting this year.



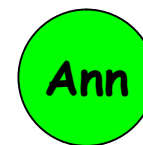
We will invite Sally Ann Larkin, the Safeguarding Adults Coordinator to come to one of our meetings.



Wendy Purdy was not re-elected as a Medway Councillor last month.

Ann will ask for another Councillor to come to our meetings.

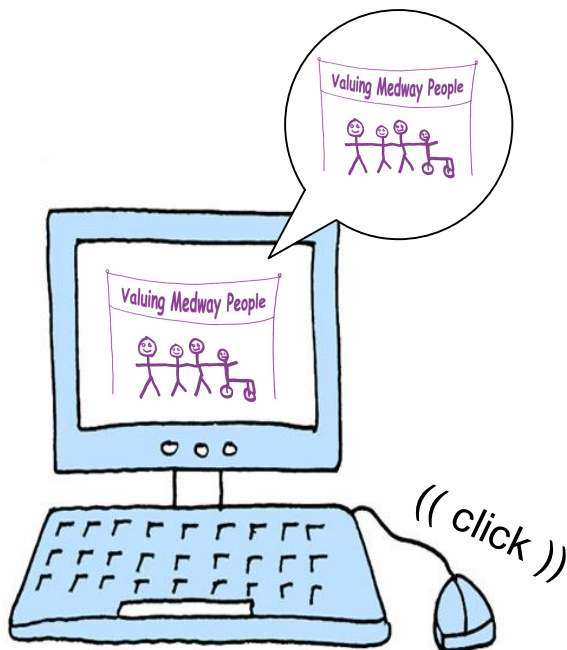
Ann and Kathy will write a letter to Wendy to thank her for working with us.



We looked at the notes from the Awayday we had on 30th April 2007.

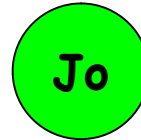
The notes can be seen on our website [www.valuingmedwaypeople.org.uk](http://www.valuingmedwaypeople.org.uk)

We will be having some special events this year:

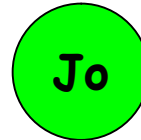


Transport Event - in September

Transport Forum - Jo will invite Paul Clark M.P.



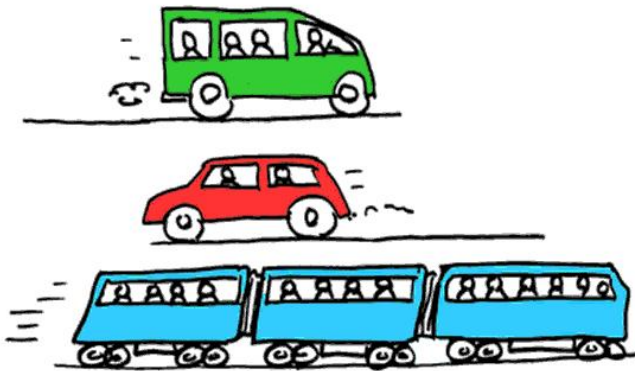
Health Event - Jo will let us know the date



Keeping Safe Event - 6th July 2007 2-5pm

see the invitations on our website

[www.valuingmedwaypeople.org.uk](http://www.valuingmedwaypeople.org.uk)



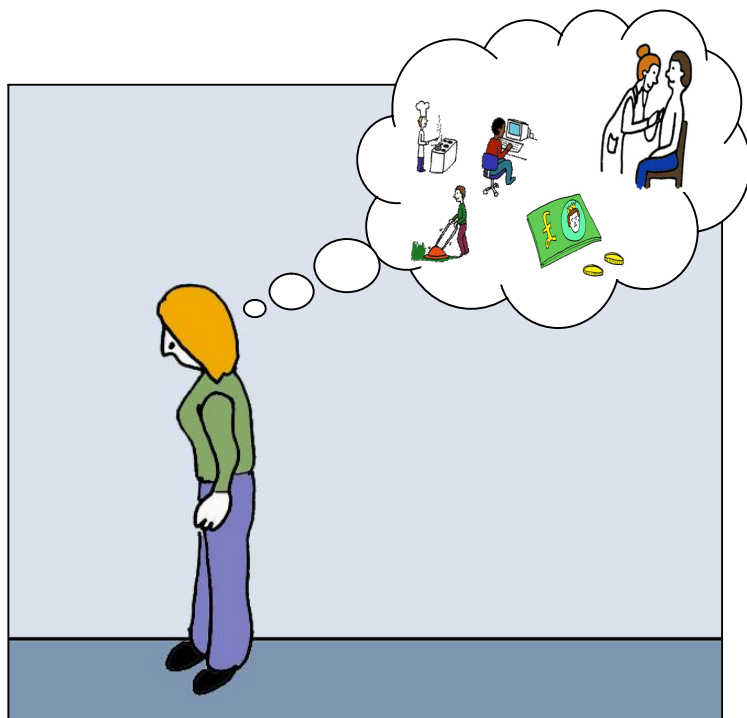


### 3. Person Centred Activity.

We sang Happy Birthday to Reg.

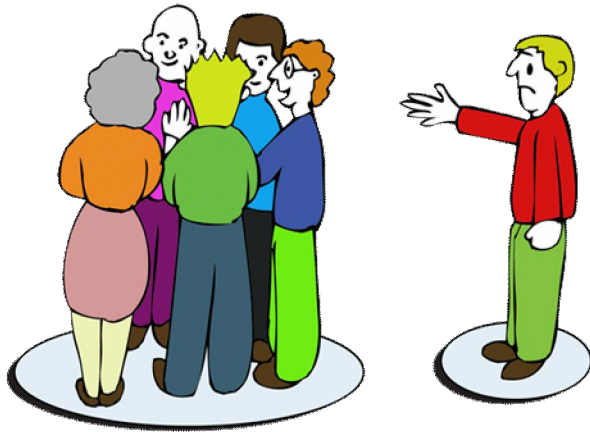
Reg is now an older carer.

### 4. Very important issues.



The Government wants to find new and better ways to support people who are excluded from services.

Excluded means not getting support in things like getting jobs, a place to live, health care, social care, information or benefits.

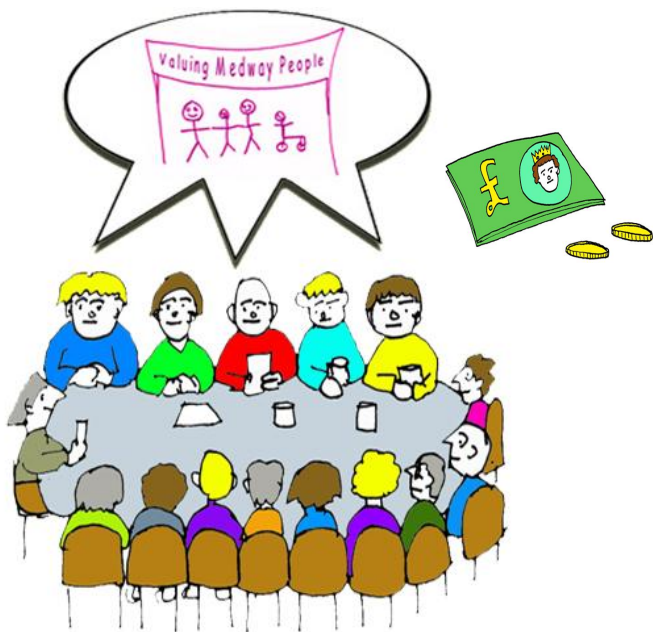


Exclusion sometimes happens when no agency takes the lead in supporting a person.

When somebody is excluded for a long time it is called chronic exclusion.



Colin has helped get £492,000 (four hundred and ninety two thousand pounds) from the Government to help people that are excluded.

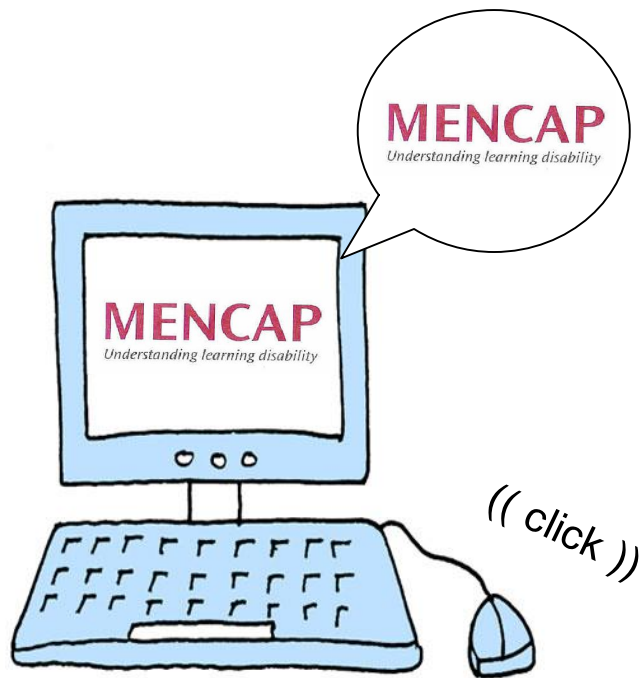


The money will be used to help chronically excluded adults in Medway.

The project will start in October and last 3 years.



The exclusion project will work with our autism sub group.



Mencap are launching a new campaign for Learning Disability week, this can be seen on:

[www.dontstickit.org.uk](http://www.dontstickit.org.uk).



The Joint Committee on Human Rights for people with a Learning Disability wants know if people with a learning disability are getting their human rights.

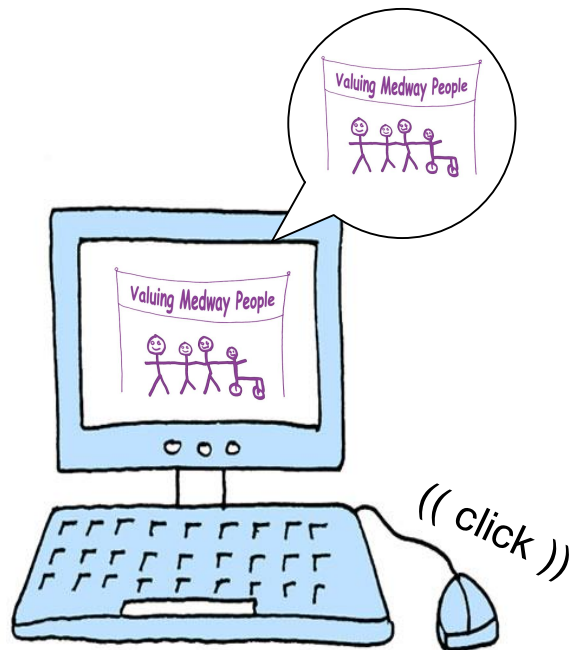
Viv asked members of the Partnership Board to write and let them know.

We can find the information on this website link: [www.findavoice.org.uk](http://www.findavoice.org.uk)

## 5. Feedback forum for Adults with Learning Disabilities.

The June Forum talked about Friendships and Getting a Life.

Jason read the notes to us.



The notes can be seen on our website  
[www.valuingmedwaypeople.org.uk](http://www.valuingmedwaypeople.org.uk) .

Click the link at Forum Notes



The Partnership Board has some money to support friendship projects.

Colin met with young people at Abbey Court School who want to make new friends when they leave school.

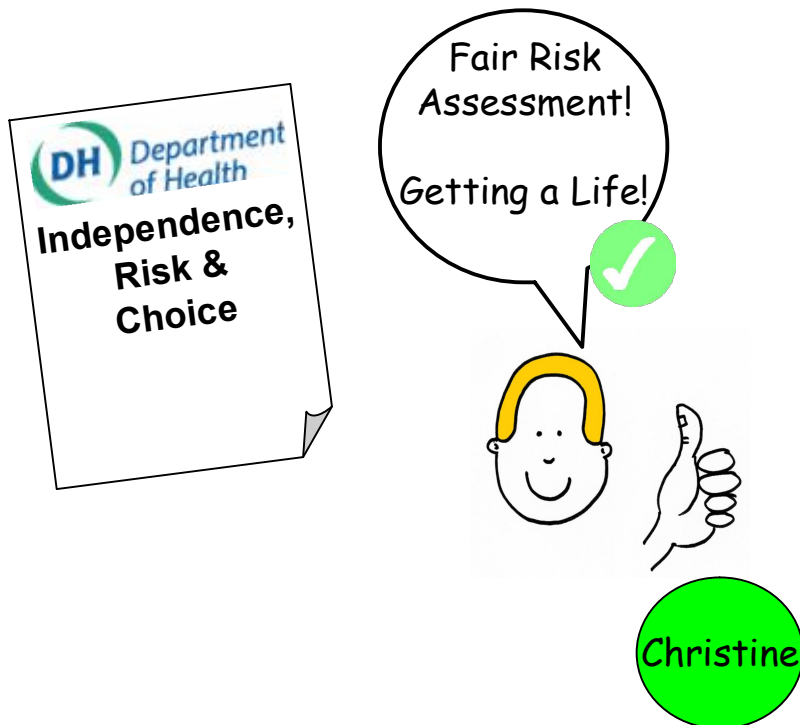
They have asked for money from the Medway Youth Fund to help them have fun and go places with friends.

It was suggested that they might join a Valuing Medway People friendship project to go places and do things with adults from the Forum.



Bridget and Beth are going to meet with young people from Bradfields School.

It was suggested that people can use the website to find friends and chat to them.



The Department of Health has written a guide called Independence, Risk & Choice.

The guide is to help people who support adults using health and social care services make fair risk assessments.

Managers in Medway are using the guide.

Christine Edwards has some new Risk Assessment forms.

She will send them to the Partnership Board and Providers Forum.

## 6. Fair Access to Care

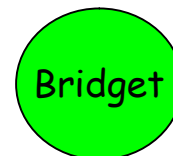


Bridget made a presentation.

Bridget told us that 'Fair Access to Care Services' is a government paper that tells us we have to be fair when deciding what social care services adults can have.

The assessments must look at what people need and the risks to their independence. Bridget is checking to see who gets social care in Medway and will report to the senior management team on how assessments should be made.

Bridget will show us example risk assessments when they are ready.



7.



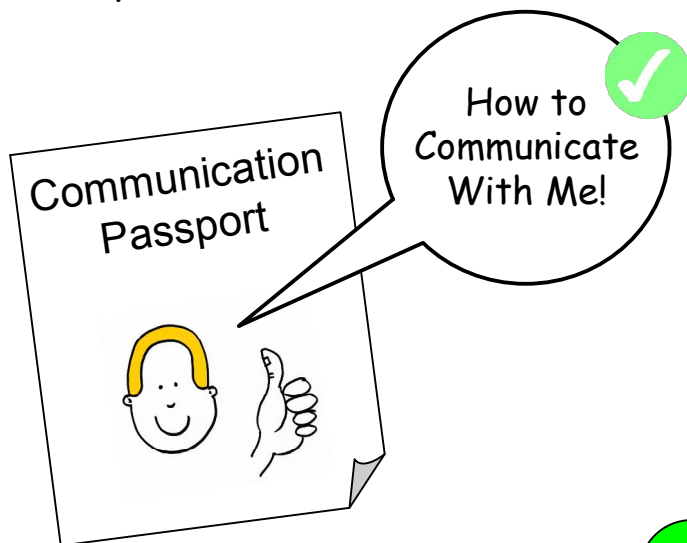
Medway Council has a Citizens' Panel.

The Panel is lots of people who help the Council make decisions.

We agreed that when the Council consults the Panel it should also include the Carer's Forum.

Bridget

## 8. Feedback from Providers and Voluntary Sector Forums



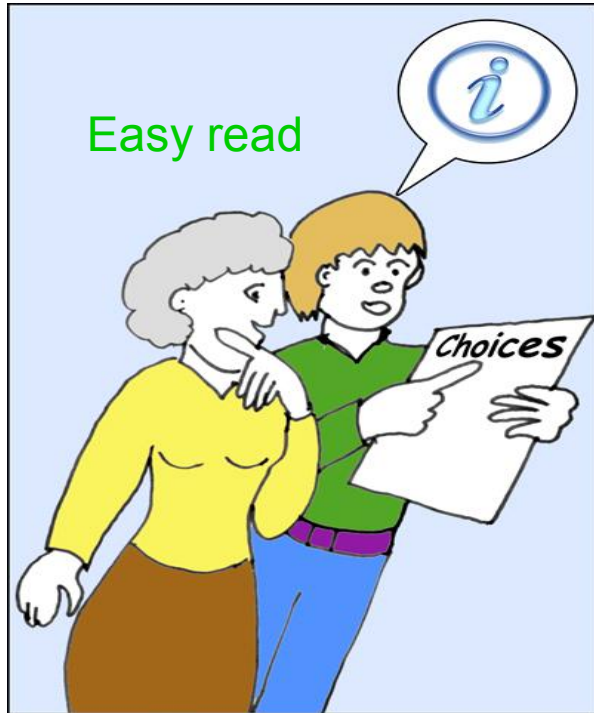
Kay Meinertzhagen from Signalong showed us some good work going on to let people have communication passports.

Communication passports can help people have fair access to services and support.

Ann would like the whole Council to support the use of Communication passports.

Ann asked Kay to meet with Kathy Wadsworth's management team to get support.

Kay

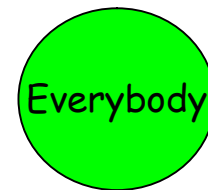


Medway Council has a Communications Manager.

Her name is Colette Glasson

Colette wants to make information easier to read.

Anybody who wants to help Colette should let Nikki know.





## Providers Forum

The Forum had talked about Individual Budgets.

Individual Budgets can give people greater choice and control over their care.

Jo and Amanda told us that Medway Council will employ a team of people to make Individualised budgets possible.

They hoped the people will start in the autumn.



10. Bridget is checking the services to adults with a learning disability.

The check is called an 'audit'.

Carers and service users will be able to have a say.

It will take the team 18 months to finish checking.

Things being checked first are:

How the money is managed

How safe service users are

The Enhanced Care Unit

The New Directions Service

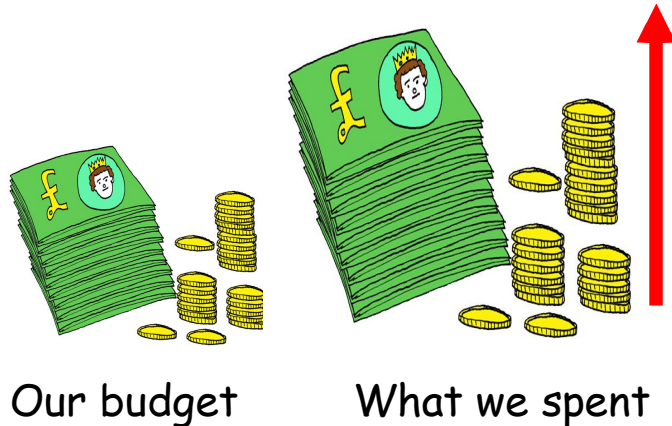
How the new Community Integrated Team is working.

Bridget will let the Partnership Board know what the team finds out.

**June 2007 → January 2009**



11. We talked about money we have for services.



Our budget

What we spent

Last year we had a budget of £20,000,000 (twenty million pounds) to pay for supporting adults with learning disabilities.

Over the past year we spent £850,000 (eight hundred and fifty thousand pounds) more than we had in the budget.

Most of the overspending was on private residential care.



The budget we have for 2007 will be more than last year.

We will control the budget by practising Fair Access to Care Services.

We will allow some people choices other than residential care.



12. Kay, Reg and Viv will write a Carers' Plan.

The Plan will be sent to the Primary Care Trust and Medway Council.

We will see the Plan at our September meeting.





### 13. Any other business

Maidstone Health Implementation Group have asked if anyone from this group would like to attend theirs.

It was agreed Jason would go.